




Supervision and Environmental Monitoring of River Training and Dredging Works on Critical Sectors on the Danube River

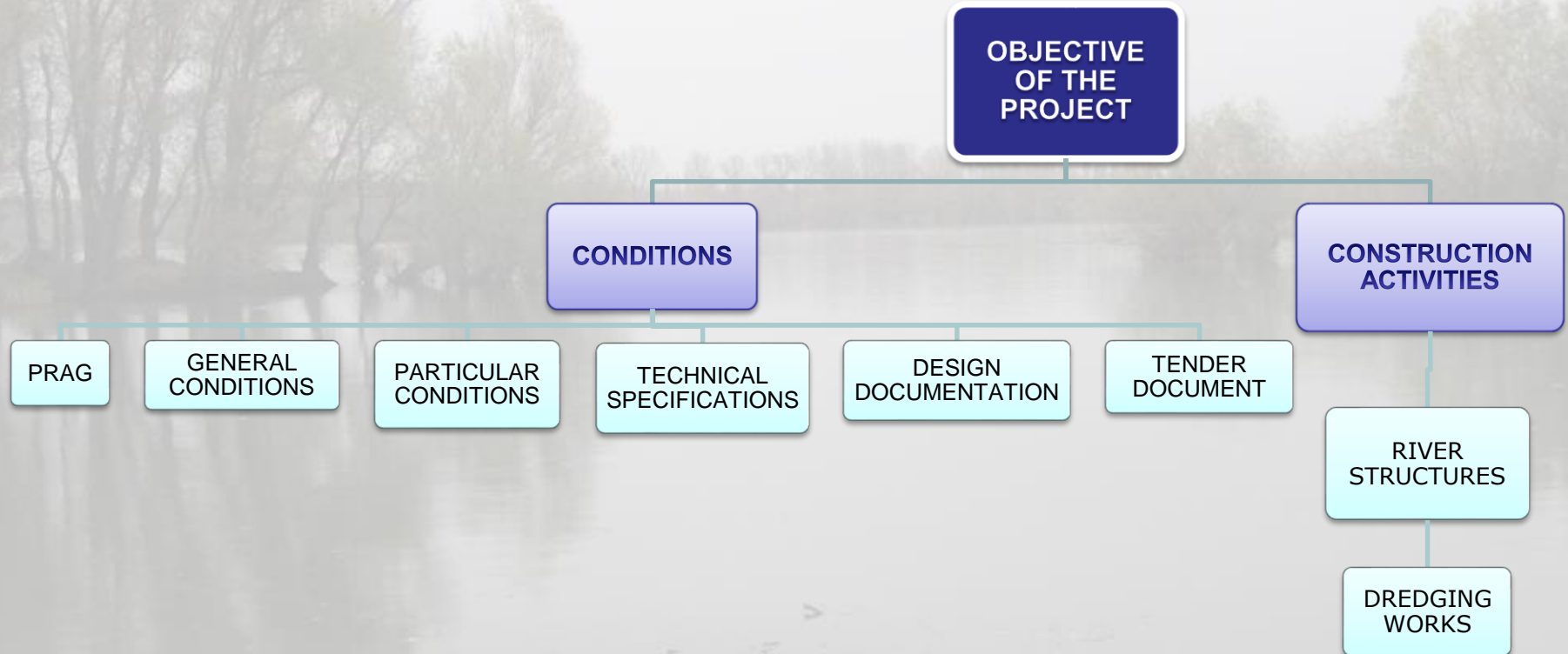
THIRD STAKEHOLDERS' FORUM MEETING – 21st of September 2018

**Republic of Serbia
Ministry of Construction,
Transport and Infrastructure**

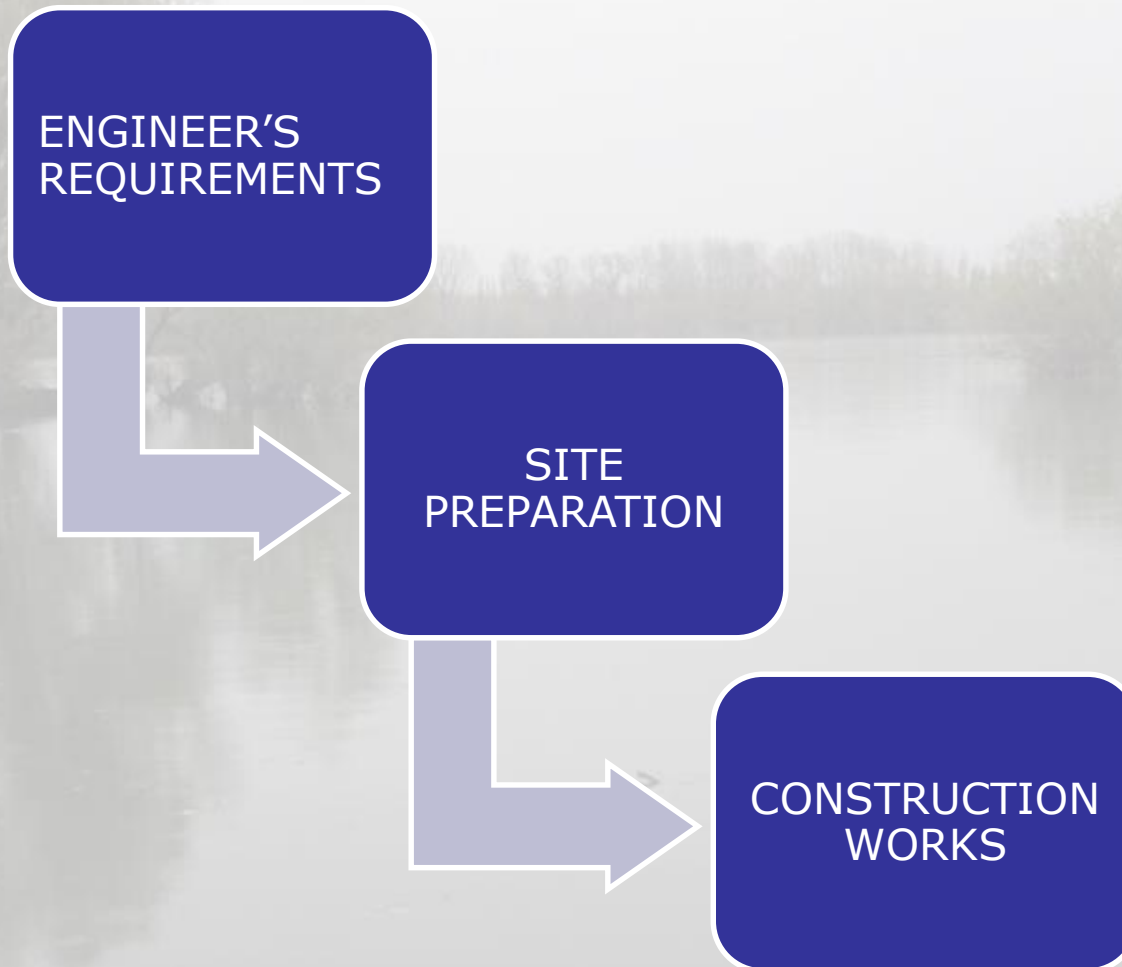


The background of the slide is a faded, grayscale image of a wide river. The river's surface is calm, reflecting the trees and foliage that line both banks. The trees are dense and appear to be deciduous, with some showing signs of autumn. The overall atmosphere is serene and natural.

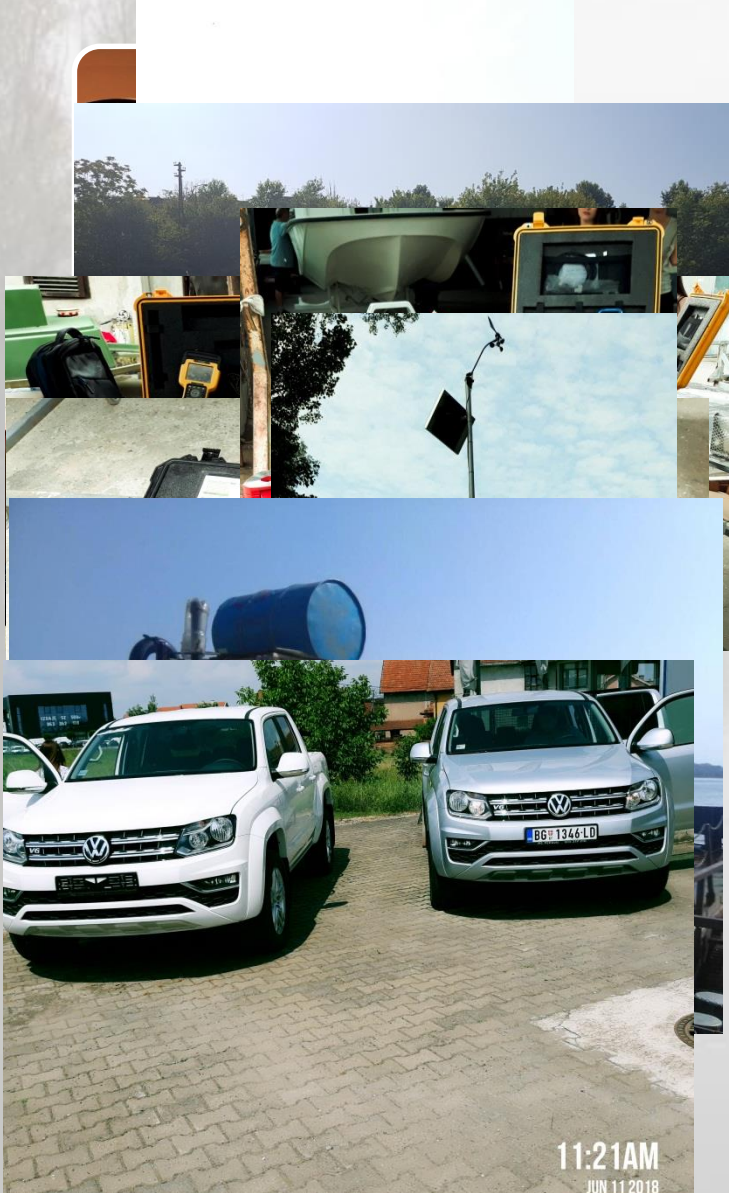
☐ River Training and Dredging Works Programme



PROGRAMME AND PROJECT IMPLEMENTATION SCHEDULE



ENGINEER'S REQUIREMENTS



1) Principle office

2) Floating office

3) Vessel

4) Hydrographic survey equipment

5) ADCP equipment

6) Geodetic equipment

7) Installation of six Gauging Stations

7) Installation of IP cameras

8) Transportation on site

Materials

- Geotextile
- Stone
- Laboratory
- Loading/unloading point

Plant and personal

- Geotextile placing equipment
- Self unloading barge
- Rock placing plant
- Tugboat
- Engineers and Workers
- Vessel for survey

Survey

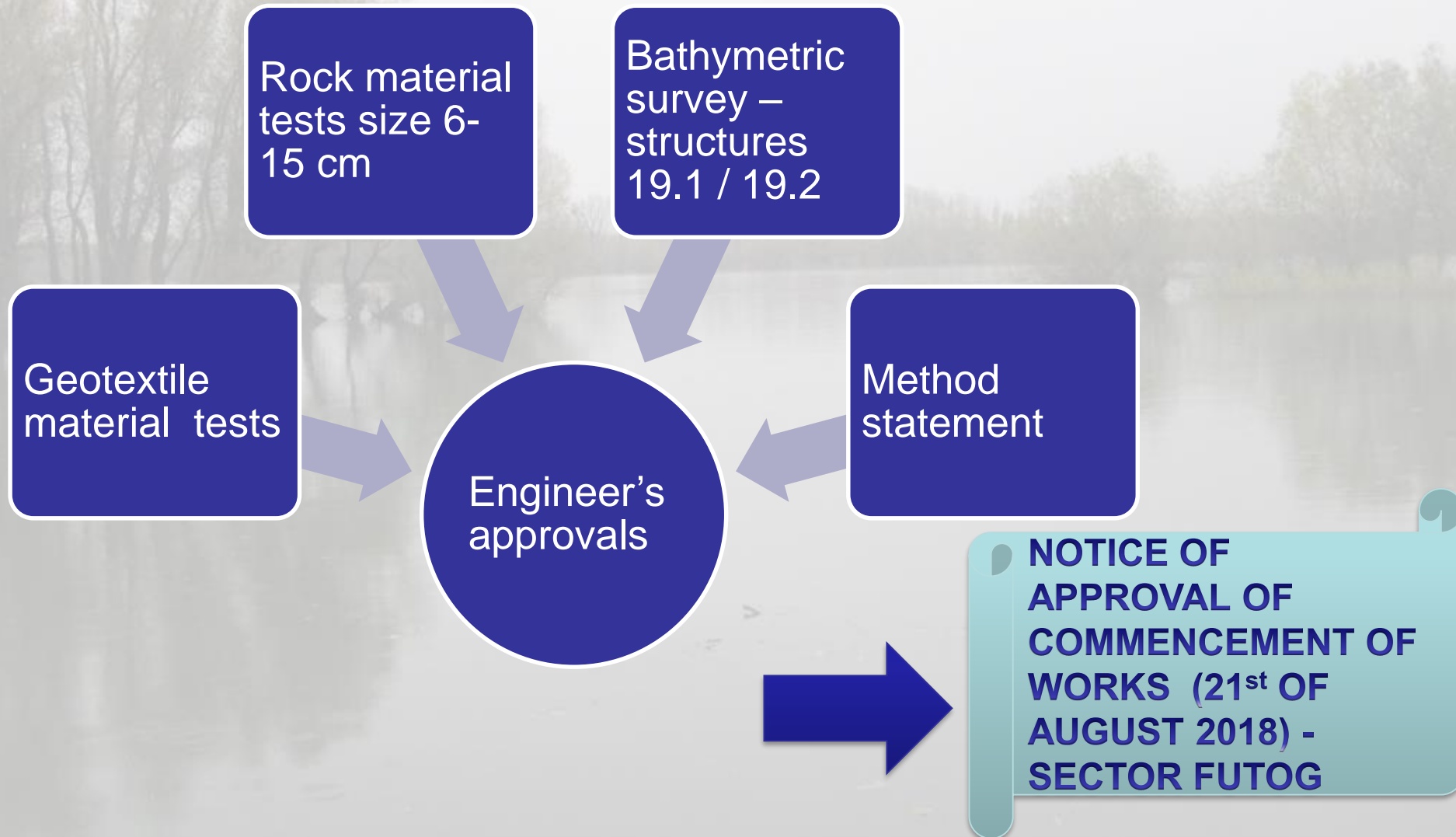
- Calibration of the equipment
- Survey



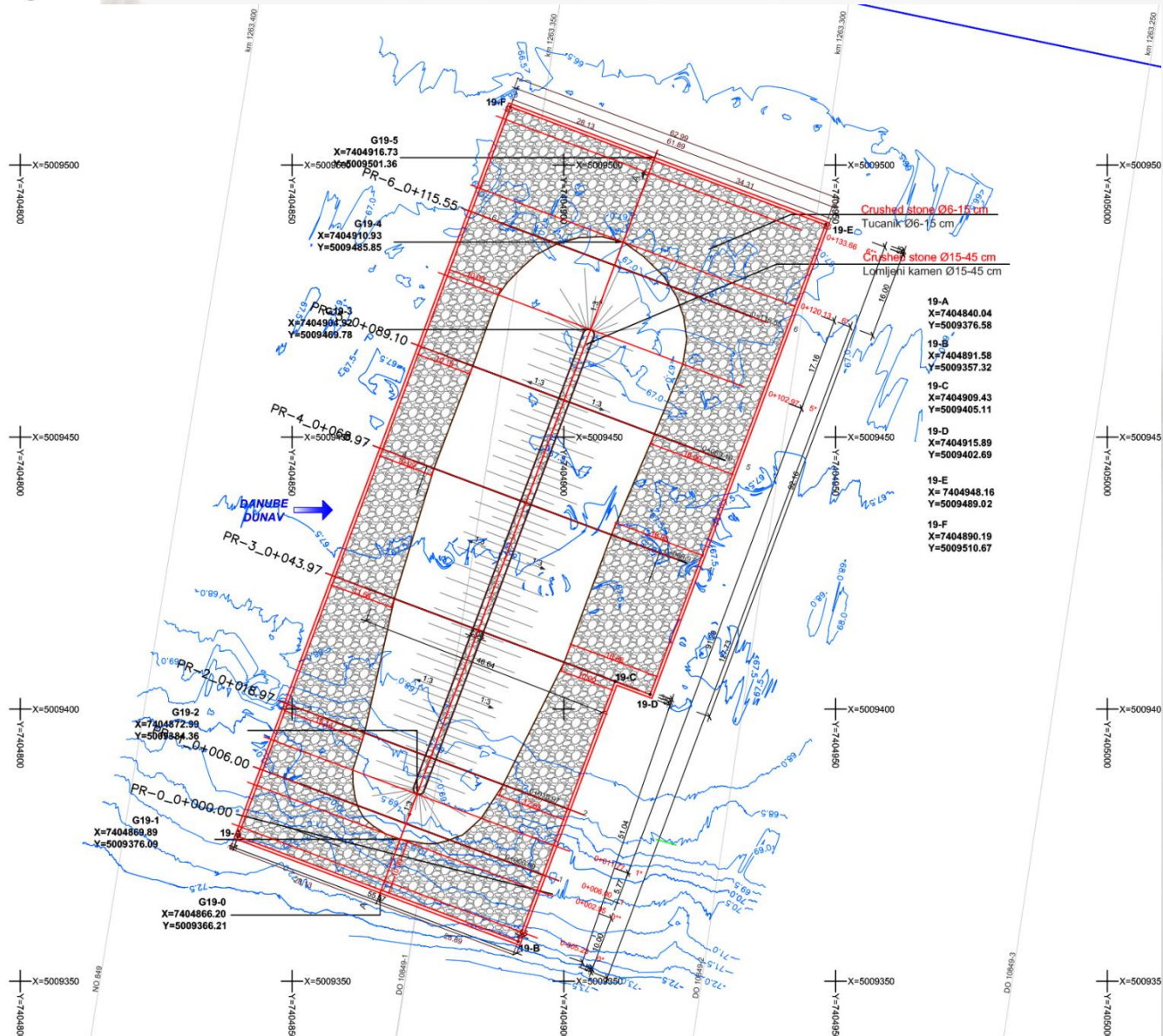
CONSTRUCTION WORKS

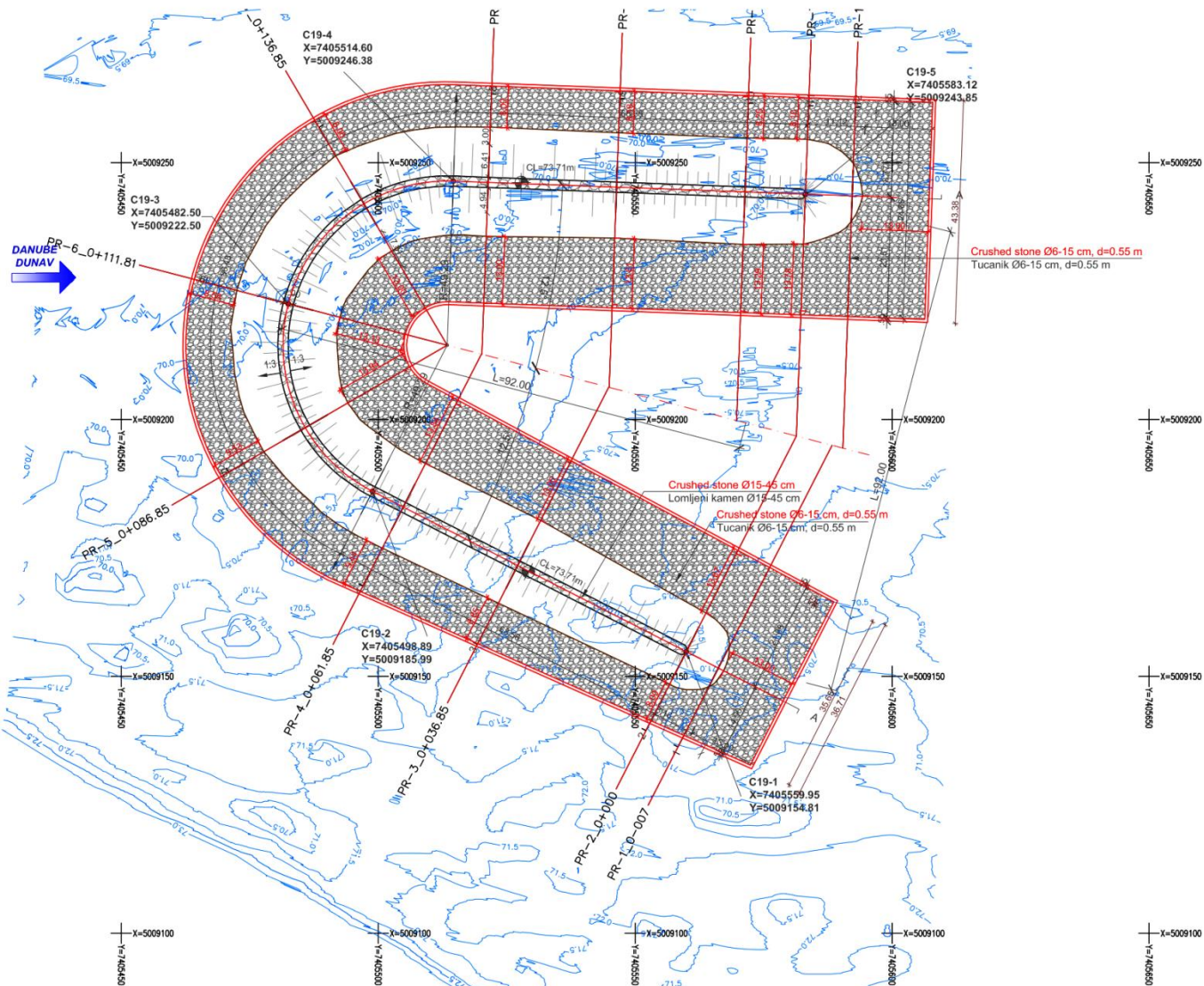
Nº	Name of critical sector	Type of works	Chainage from	to
18	Susek	Dredging A	1285+000	1283+950
		Dredging B	1282+650	1282+050
19	<u>Futog</u>			1265+000
		<u>Detached groyne</u>	1263+350	
21	Arankina Ada	Dredging	1246+600	1245+300
22	Čortanovci	Dredging	1240+300	1239+350
		Sill nº 1	1237+700	
		Sill nº 2	1237+150	
		Sill nº 3a	1236+150	
		Sill nº 3b	1236+000	
23	Beška	Dredging	1229+600	1227+400
24	Preliv	Chrevon nº 1	1200+600	
		Chrevon nº 2	1199+800	

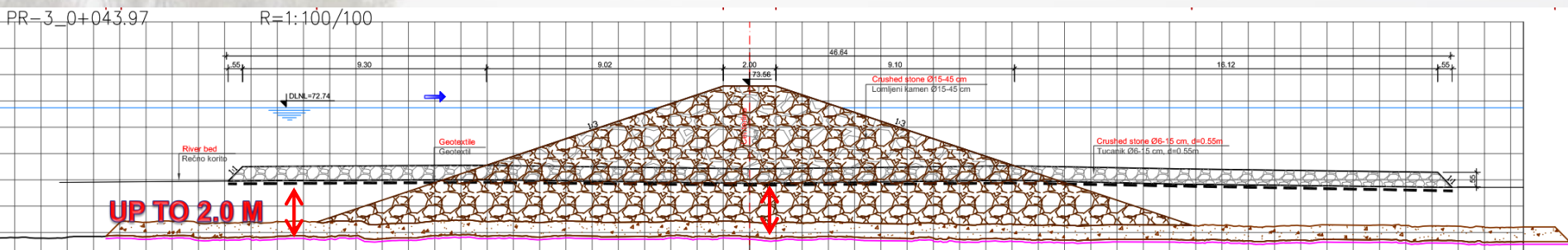




STRUCTURE 19.1







Materials	Unit	Quantity-19.1 (calculated in the Final Design)	Quantity-19.1 (calculated from new survey)
Geotextile	m ²	5.632,00	7.785,00
Base layer (6/15 cm)	m ³	3.098,00	4.237,00
Core of the structure (15/45 cm)	m ³	4.732,00	8.786,00

Construction method

Cleaning the
riverbed



Laying the
geotextile



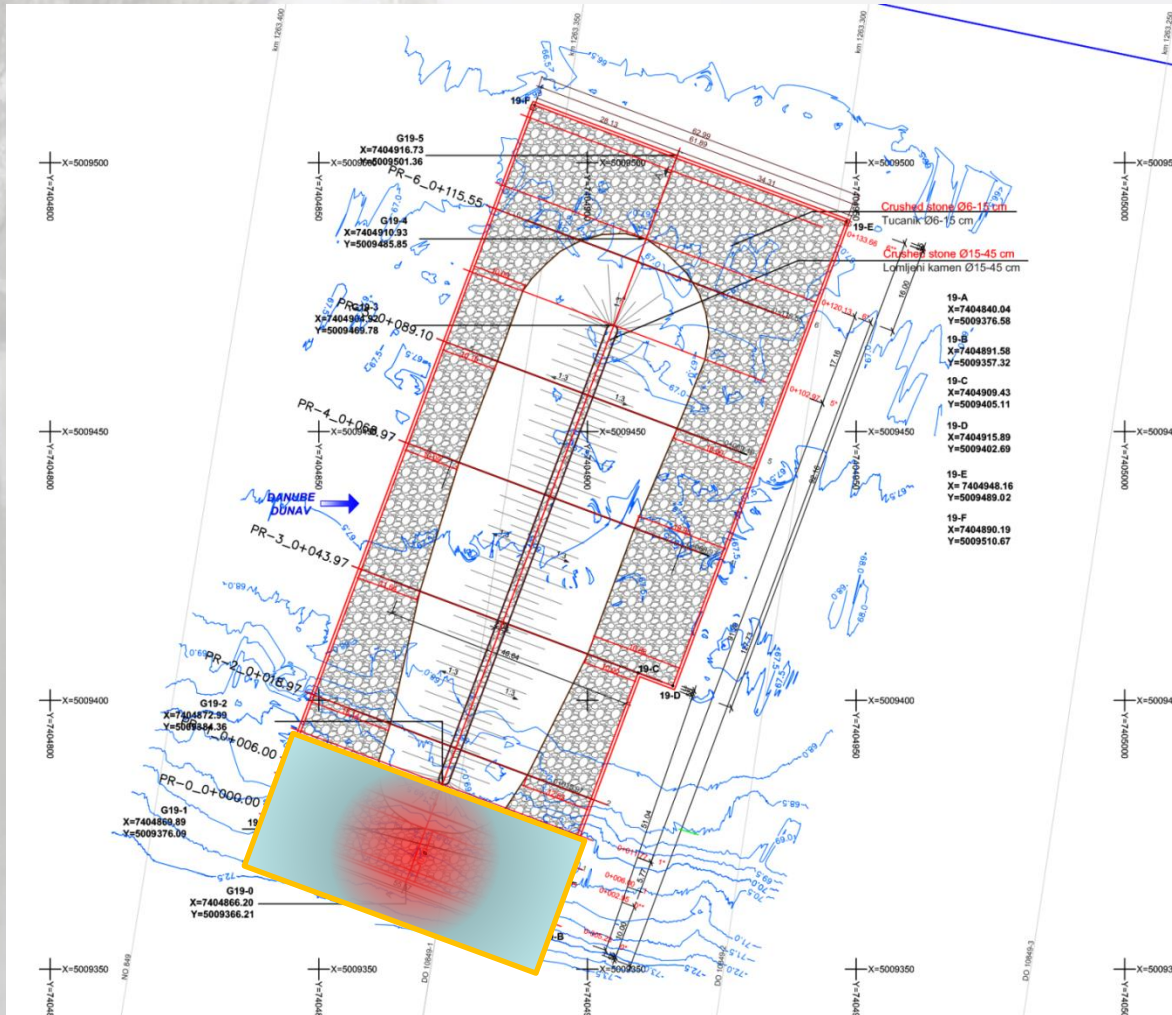
Putting the
stone material
on the
geotextile



PERFORMANCE OF THE CONTRACTOR

Item	Activity	Planning date	Starting date
1	Handover and commissioning of all Engineer's Requirements	02.07.2018	Completed in due time
2	Start Construction Works of the first structure (detached groyne 19.1)	16.07.2018	21.08.2018
3	Start Construction Works of the structure (Chevron 24.1)	05.08.2018	Not started

No.	Equipment	Quantity
1	Geotextile placing equipment-roller	1
2	Rock placing plant with integrated excavator	1
3	Tugboat	1
4	Self unloading barge	1
5	Transportation barge	1



Thank you for your attention

